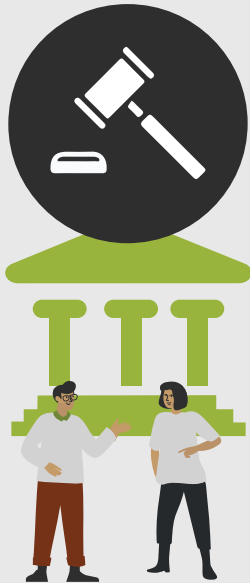


Criterion 5

Inclusive Governance



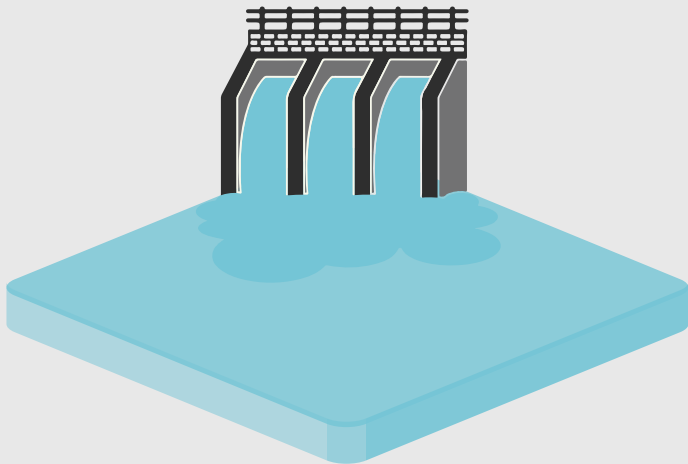
Criterion 1

Social Challenges



Criterion 2

Design with scale in mind



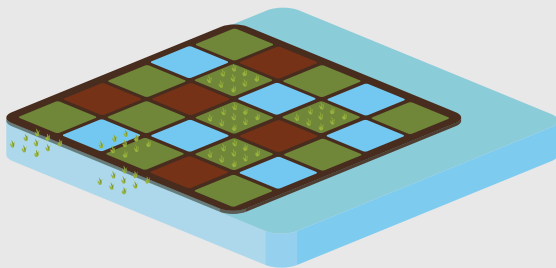
Criterion 6

Balance Trade-offs



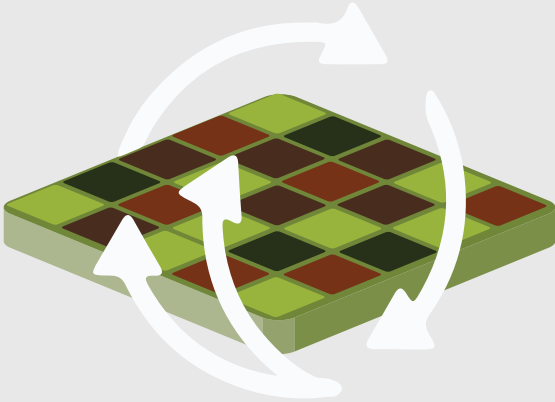
Criterion 3

Biodiversity Net-gain



Criterion 7

Adaptive Management



Criterion 8

Mainstreaming and Sustainability



Criterion 4

Economic Viability

